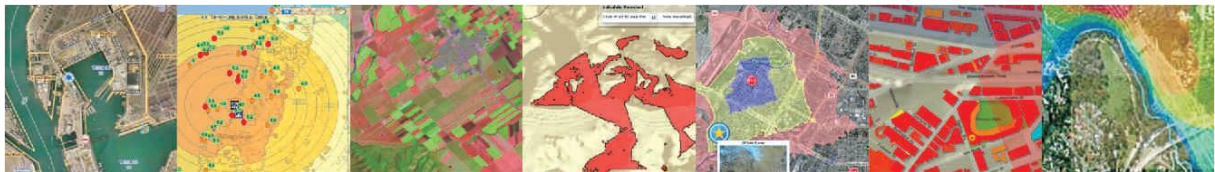


## About As

ESRI Bulgaria is an IT company, leader in the field of Geographic Information Systems (GIS) on the Bulgarian market. Offering the most advanced high-tech products, solutions and services, ESRI Bulgaria helps its clients in making informed management decisions and improving their performance.

For more than 15 years the company has implemented nationwide GIS projects in various spheres of the economy, including cadastre, engineering infrastructure, environment, agriculture, security, health, education and many others.



## In a team with the best

ESRI Bulgaria is the exclusive distributor of Esri Inc. for Bulgaria

### Esri Inc.

Esri Inc. is the global pioneer and leader with over 40 years experience in the field of Geographic Information Systems. With a vision for the future, the company is constantly developing and improving GIS technology, turning Esri platform in global GIS standard.

Every day, millions of users around the world use Esri GIS technology to optimize management of their business. Esri GIS software has become an indispensable (important) tool in more than 24,000 state and local institutions and nearly 400,000 companies.

In order to respond effectively and with high quality to different customers specific needs, Esri Inc. has built an international network of 80 offices in over 200 countries. Moreover, the company works closely with over 65 companies in the IT field, including leaders such as Microsoft, IBM, Oracle, Amazon, SAP and many others.

## ESRI Bulgaria gives (offers) solutions for:

### ITT Visual Information Solutions

ITT VIS is a leading provider of software and services for image processing. Hundreds of organizations around the world use ITT VIS decisions to make the primary spatial data in a reliable and useful information.



## **SpeedikonFM AG**

SpeedikonFM AG provides integrated IT solutions for corporate property management and associated facilities. The company provides software and high-quality facility management, which place it among the leading suppliers in this field in Europe.

## **Trimble**

Trimble is a leading high-tech products for positioning producer (maker). Integrating GPS, laser and optical technologies with application software, wireless communications and services, the company provides complete solutions for collection, management and analysis of complex field information.

## **Microsoft Corporation**

ESRI Bulgaria is a Microsoft certified gold partner. Founded in 1975, Microsoft has approved itself as the worldwide leader in software, services and Internet technologies for computer business management and human resources.

## **Oracle**

As a Certified Gold Partner, ESRI Bulgaria is a part of the international partner network of Oracle - the second largest independent software company in the world. Offering complete (overall) integrated business software and hardware systems, Oracle has established itself as one of the leading suppliers in this field.

## **VMware**

ESRI Bulgaria is a certified technology partner of VMware - the leader in the field of software solutions for business infrastructure virtualization. With more than 25,000 business partners and more than 250,000 customers worldwide, VMware is one of the fastest growing public software companies.

## **Full services package**

ESRI Bulgaria provides full services package including consulting, design and geodatabase build, delivery of basic software, development and implementation of application systems, system integration, training, technical support and more. The ESRI Bulgaria team works with clients, contributing to their development and supports the best (maximum) use of the modern GIS technology capabilities.

## **Application systems development**

ESRI Bulgaria has a proven experience in the development and implementation of GIS solutions of national importance in different (various) spheres of the economy. Our team consists of experienced GIS professionals dedicated to their work in finding the most appropriate solution for each client,



assisting all phases of a project - analysis, design, development, implementation, training and support .

## Modern architecture

The highly qualified team of ESRI Bulgaria works closely with customers on enterprise architecture specification and development, which is necessary to achieve high efficiency and cooperation between different departments, business processes and databases in the organization.

## What is GIS

GIS is a technology for creating, collecting, storing, updating, processing, analyzing, visualizing and sharing of geographic information through maps, sets of geographic data, models, data processing, metadata and services.

GIS combines the spatial location and information of objects. Combining and visualizing various layers of information provides general picture and thereby promotes better understanding of the events and relationships between objects.



## Main benefits of GIS

- Efficient management of large-scale spatial data
- Increasing the efficiency of work processes
- Reduce duplication of activities
- Making informed management decisions
- Optimization of operational activities
- Improve communication within the organization
- Reduce costs
- Increased return on investment
- Ensuring regulatory compliance

## Esri platform

ArcGIS is a scalable family of software products for creating a complete integrated GIS, built on industry standards and meeting the different organizations business needs. The users can access and share data and GIS functionality through ArcGIS within the organization, on the field work and Internet in order to improve business processes and make informed and responsible decisions.

- Rich functionality



- Easily used tools
- Modern IT standards
- Scalable solutions

## ArGIS for Desktop

ArcGIS for Desktop is a software products family, which enabled capturing, storing, updating, processing, analyzing and visualizing geo-referenced information. The main desktop products are: ArcGIS for Desktop Basic, ArcGIS for Desktop Standard and ArcGIS for Desktop Advanced.

### ArcGIS for Desktop Basic (ArcView)

ArcGIS for Desktop Basic is easy to use GIS software for visualizing, managing, designing and analysis of georeferenced information. ArcGIS for Desktop Basic helps for better understanding the data geographic context and relationships between the objects.

### ArcGIS for Desktop Standard (ArcEditor)

ArcGIS for Desktop Standard is a powerful desktop GIS for editing and managing geodatabase. The system includes all the functionality of ArcGIS for Desktop Basic and adds a comprehensive data editing set of tools. ArcGIS for Desktop Standard allows both a single and multi-user editing, which can be done also on the field.

### ArcGIS Desktop 3a Advanced (ArcInfo)

#### ArcGIS for Desktop Advanced (ArcInfo)

ArcGIS for Desktop Advanced is a complete desktop GIS that includes all the functionality of ArcGIS for Desktop Basic and ArcGIS for Desktop Standard and also adds multiple tools for geoprocessing and data conversion. ArcGIS for Desktop Advanced allows the management of large amounts of data and perform complex spatial analysis.

#### A set of extensions completes ArcGIS Desktop platform functionality:

**ArcGIS Spatial Analyst** - Powerful spatial analysis

**ArcGIS 3D Analyst** - Three-dimensional visualization, modeling and analysis

**ArcGIS Network Analyst** - Network-based spatial analysis related to routes and finding the closest objects

**ArcGIS Data Reviewer** - Automated, simplified and improved management of data quality

**ArcGIS Workflow Manager** - Centralized management of GIS workflows and processes within the organization





**ArcGIS Data Interoperability** - Eliminate barriers of using and sharing data from different formats

**ArcGIS Geostatistical Analyst** - Geostatistical analysis and modeling of spatial data

**ArcGIS Schematics** - Automatic generation, visualization and processing the linear networks schemes

**ArcGIS Tracking Analyst** - Tracking of mobile objects and events in time

## Other extensions

**Esri Production Mapping** allows the generation of spatial content, management of accurate data and cartographic products. This extension increases the user productivity and optimizes costs through standardization and configuration processes.

**ArcGIS Defense Solutions** (ArcGIS Military Analyst, Military Overlay Editor (MOLE), Grid Manager) is a solution for military planning, data analysis and obtaining spatial view over operational and tactical situations.

**Esri Aeronautical Solution** is a GIS-based platform to manage aircraft data and create high-quality diagrams and aeronautical maps.

**Esri Defense Mapping** is a solution to create and maintain high-quality topographic database and cartographic products.

**Esri Nautical Solution** is a GIS-based platform to manage a large amount of data and create standardized marine database, navigation maps and diagrams for different needs.

## Server GIS

### ArcGIS for Server

ArcGIS for Server is a modern platform for enterprise GIS applications that can be accessed and used by many users in a network. ArcGIS for Server facilitates the access to GIS data, metadata and services, providing control over the content through centralized management of spatial data, including images. Rich base functionality of ArcGIS for Server can be supplemented with the following extensions: ArcGIS 3D Analyst extension, ArcGIS Data Interoperability extension, ArcGIS Spatial Analyst extension, ArcGIS Geostatistical Analyst extension, ArcGIS Image extension, ArcGIS Network Analyst extension, ArcGIS Schematics extension, ArcGIS Workflow Manager extension.

### ArcGIS Image extension

ArcGIS Image extension is a platform for management, real-time processing and distribution of spatially referenced images. This product allows a quick access, visualization and analysis of file-based and raster images from different sources - satellite images, aerial photos, digital cameras, raster maps, digital field models and more. ArcGIS Image platform supports a lot of web standards, including WMS, WCS, KML, SOAP and REST.





## Specialized applications

**Business Analyst** – To make fast and optimal choice of locations and make marketing analysis. The solution includes: Business Analyst Online, Business Analyst Desktop, Business Analyst Server and BAO API for customized applications.

**ArcGIS for INSPIRE** - A key technology for establishing an infrastructure for spatial information to ensure that data services and metadata match up with INSPIRE Directive.

**ArcLogistics** - Creation of optimized routes and schedules based on various factors and business activities, and solving also transportation optimization problems.

## Web Applications

ESRI Bulgaria develops Internet GIS solutions to publish and spread the spatial information on the Web. Users can access and use enterprise GIS applications, data and functionality via web browser.

## Mobile GIS

Esri mobile GIS solutions include ArcGIS for Windows Mobile, ArcPad and some applications for smartphones. They provide an opportunity for collecting, storing, updating, processing and analysis of geographic information on the field. Allowing maintenance of databases and real-time applications, including on the field, mobile GIS solutions optimize the analysis time and the process of decision making.

## Free Products

### Desktop:

**ArcGIS Explorer Desktop** - facilitates the management, visualization and sharing the GIS information

**ArcReader** - allows the view, management and printing maps and globes

### Web:

**ArcGIS Explorer Online** - facilitate the management, visualization and sharing the GIS information by providing a direct access to base maps and other content.

**ArcGIS.com** - allows the creation and view of Web maps that contain basemap and additional layers.

### Mobile:

ArcGIS for Smartphones - allows navigation by (according) a map, collecting and reporting data, and also perform GIS analysis.



## GIS Developer

ESRI Developer Network / EDN / is an annual subscription program that offers developers a rich library of ArcGIS products, tools, and documentation. The software developers are able to create different server, desktop, web and mobile GIS applications through it. Software development can be done using a variety of languages, platforms and tools (. NET, Java, JavaScript, Silverlight, Flex, COM, etc.).

## Basic and specialized digital geodata

ESRI Bulgaria provides full services including consulting, development, migration and processing of geodata for a lot of public institutions and private organizations (ministries, agencies and corporate companies from different sectors). The company is very well experienced in working with data in various national and international grids, different formats, supported standards and more.

## Geodatabase for cities

ESRI Bulgaria offers country basic geodata:

- Cities (addresses, Transport network, objects of interest, etc.).
- Resorts
- Relief
- 3D models of regional cities

## Digital geodata for Bulgaria

ESRI Bulgaria offers country basic geodata:

- Hydrology
- Places
- Counties
- Transport Network
- Objects of interest
- Relief

## ITT VIS products

**ENVI** is a software for getting fast, easy and accurate information from spatial images. ENVI provides the ability to:

- Interpretation of images of different formats
- Image Processing
- Different types of spectral and other analyzes
- Sharing of information extracted from images
- Customize and extend functionality



## SpeedikonFM products

**SpeedikonFM** is a software solution for property management and associated facilities. SpeedikonFM system is built on modules - each module has the ability to work independently or together with other modules installed in a joint package. The system assists users in:

- Space Management
- Maintenance Management
- Facilities Management
- Energy Efficiency Management
- Rental Management
- Inventory Management
- Other

## Trimble products

Trimble products are designed to work on the field. Different mobile devices allow access to the GIS system and geodatabase on a field as well as collecting, processing, editing and updating data through them. Trimble products include:

- Product range Trimble GPS Pathfinder
- Product range Trimble GeoExplorer
- Product range Trimble Juno
- Product range Trimble Nomad
- Product range Trimble Yuma
- Product range Trimble Recon
- Product range Trimble GeoBeacon
- Specialized software to work under field conditions

## GIS training

ESRI Bulgaria realizes that the successful implementation of an information system depends on professionals expertise - from management to the end users. GIS technologies are developing with a rapid pace and the technology specialists must keep their knowledge and skills on a consistently high professional level.

Therefore ESRI Bulgaria offers courses with diverse range in duration that provide in each case the needed combination of theoretical knowledge and practical skills. Our highly qualified team of teachers performed not only standard ESRI GIS technology courses, covering a wide range of basic GIS products, but also applied systems courses.

## Training Center





ESRI Training Center provides its students an excellent opportunity to acquire the necessary knowledge and skills in a friendly and sophisticated atmosphere. The training center is certified by Esri Inc., equipped and technically assured in a compliance with the international standards. The basic ESRI GIS software courses are conducted (led) according ESRI certification program.

## Teachers

ESRI Bulgaria Courses are led (read) by ESRI certified teachers, experienced both in teaching GIS technology and the successful development and implementation of GIS applications in various areas of economic life.

## Clients

- Council of Ministers of the Republic of Bulgaria
- Ministry of Defence
- Ministry of Internal Affairs
- Ministry of Environment and Water
- Ministry of Regional Development and Public Works
- Ministry of Health
- Ministry of Economy, Energy and Tourism
- Ministry of Transport, Information Technology and Communications
- Ministry of Agriculture and Forestry
- Ministry of Education and Science
- Agency for Geodesy, Cartography and Cadastre
- Executive Environment Agency
- National Institute of Statistics
- Many municipalities and regional administrations
- "Railway Infrastructure" NEC ESO CEZ Bulgaria, EVN Bulgaria, Overgaz, Sofiyska Voda AD and other utility enterprises
- Vivacom, Mtel, Globul and other telecommunication companies
- Non-governmental organizations
- Other