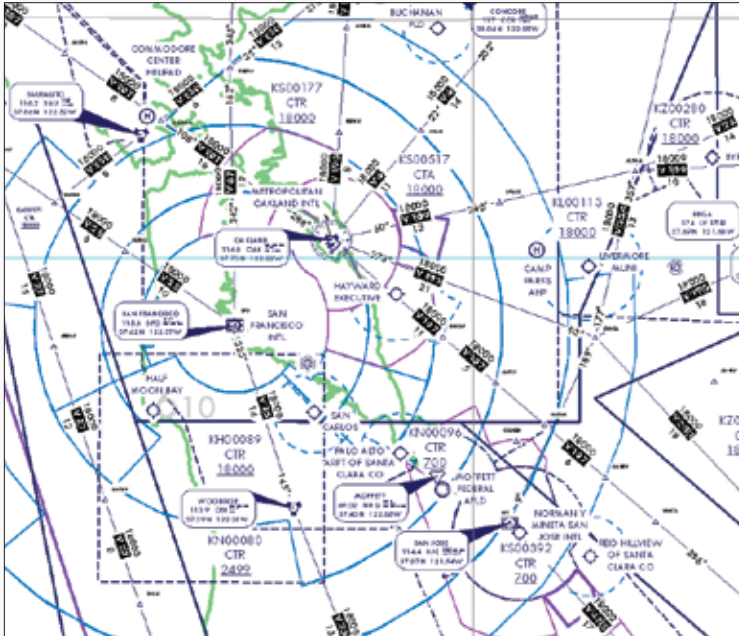
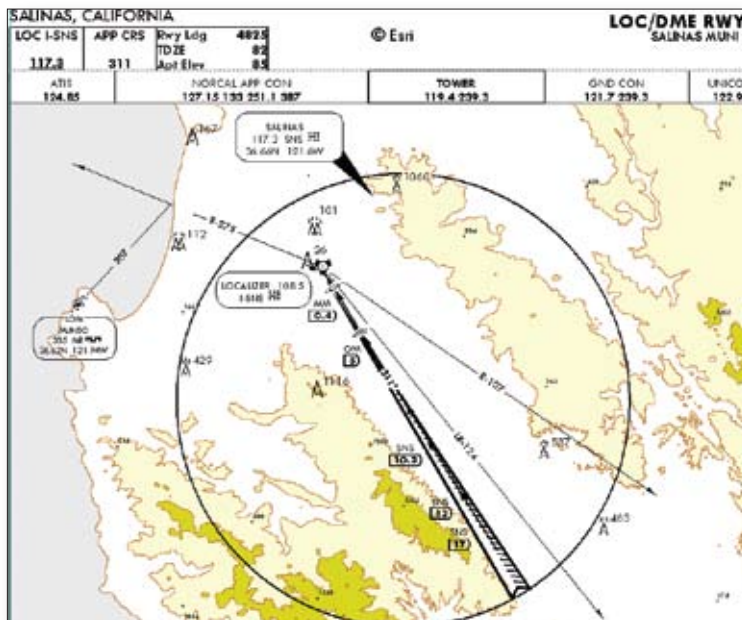


# Esri® Aeronautical Solution

Use the Full Power of GIS to Efficiently Manage Aeronautical Information



Efficiently produce and maintain database-driven enroute charts.



Utilize invaluable, specialized cartographic tools, such as the Graphic Table Element, in producing your chart products.

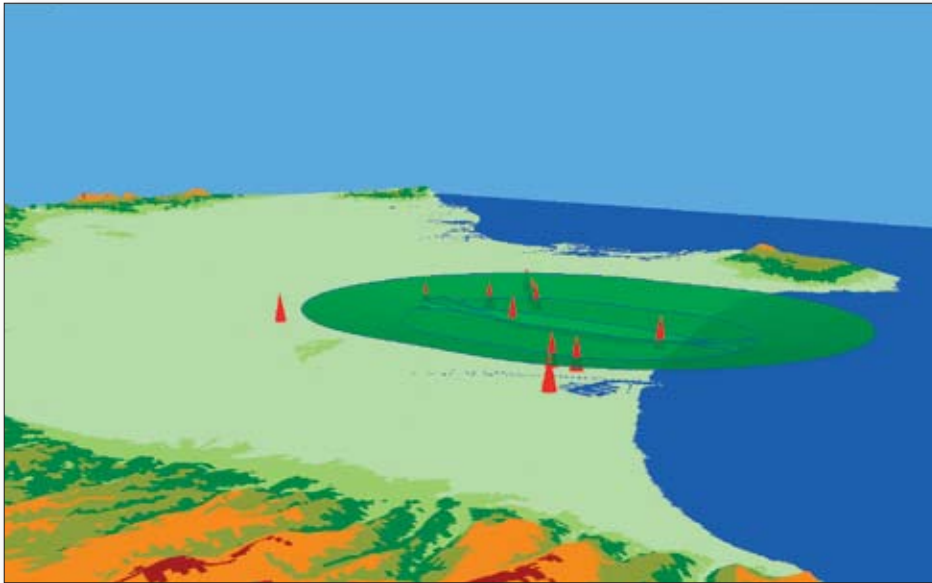
Esri® Aeronautical Solution provides a true geographic information system (GIS)-based platform to manage aeronautical data and rapidly produce high-quality charts that adhere to industry- and organization-specific requirements. Civil and military agencies, commercial airlines, and chart producers can create, maintain, and use standard aeronautical products based on the latest digital data.

## With Esri Aeronautical Solution, you can

- **Significantly reduce chart production time** by managing data and generating aeronautical charts from a central database.
- **Produce charts to your cartographic specifications** from the database, including International Civil Aviation Organization (ICAO)-compliant charts.
- **Add value for customers** by supporting custom requests.
- **Share data within the aeronautical community** using the Aeronautical Information Exchange Model (AIXM).
- **Enhance data quality** through direct loading of digital changes and automated change verification workflow management.

For more information or to request a free trial, visit [www.esri.com/aeronauticalsolution](http://www.esri.com/aeronauticalsolution) or e-mail [aero@esri.com](mailto:aero@esri.com).





Analyze vertical obstacles using geoprocessing tools and visualization.

## Key Features

Esri Aeronautical Solution includes data management tools, database models, cartographic functionality, and workflow management components that enable you to

- Edit data once and have all the charts using that data updated automatically.
- Streamline data editing operations with aeronautical-specific tools and a robust, map-based workspace for visual editing.
- Create, maintain, and update aeronautical charts with database-driven cartography that includes symbology, labels, and map surround elements.
- Perform quality control and data review via logical and spatial checks, statistical sampling, and batch rule-based checks.
- Use or customize the included samples and templates to create your production specifications or styles quickly.
- Manage both GIS and non-GIS enterprise workflows.
- Provide support for AIXM and Electronic Terrain and Obstacle Data (eTOD) aeronautical standards and compatibility with European AIS Database (EAD).

### Training and Implementation Packages

The following options are available to help you begin using Esri Aeronautical Solution:

- Standard classroom training
- Custom workshop
- On-site implementation and configuration support
- Remote implementation and configuration support

For more information or to request a free trial, visit  
[www.esri.com/aeronauticalsolution](http://www.esri.com/aeronauticalsolution)  
or e-mail [aero@esri.com](mailto:aero@esri.com).



#### Esri

380 New York Street  
Redlands, California  
92373-8100 USA

1-800-GIS-XPRT (1-800-447-9778)

Phone: 909-793-2853

Fax: 909-793-5953

[info@esri.com](mailto:info@esri.com)

[www.esri.com](http://www.esri.com)

Offices worldwide

[www.esri.com/locations](http://www.esri.com/locations)

Copyright © 2010 Esri. All rights reserved. Esri, the Esri globe logo, www.esri.com, and @esri.com are trademarks, registered trademarks, or service marks of Esri in the United States, the European Community, or certain other jurisdictions. Other companies and products mentioned herein may be trademarks or registered trademarks of their respective trademark owners.

G42350  
ESR16/10sp