

# GeoCollector™ for ArcGIS® for Windows Mobile

Mobile GIS with GPS for Superior Data Accuracy



With GeoCollector™ for ArcGIS® for Windows Mobile®, you can increase the accuracy of your data, resulting in a superior enterprise geographic information system (GIS). GeoCollector is an end-to-end field data collection solution that merges Esri® mobile GIS technology with Trimble® professional-grade Global Navigation Satellite System (GNSS) hardware.

## Easily Improve the Accuracy of Your Data

Organizations such as utility companies, natural resource enterprises, and government agencies require accurate location information to efficiently perform tasks ranging from field mapping to incident reporting. Combining mobile GIS with GNSS technology results in more accurate and reliable data that organizations can use to make timely and informed decisions.



## Why Use ArcGIS for Windows Mobile

ArcGIS for Windows Mobile is the premier software solution for GIS professionals who need to deploy and manage a mobile workforce using intuitive field mapping and GIS tools that require minimal training. Visualize, search, locate, collect, inspect, and communicate using up-to-date geographic data and maps.

### Key ArcGIS for Windows Mobile Technologies

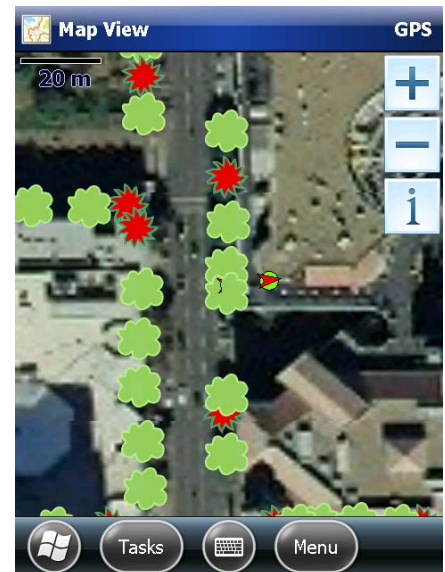
- Ready-to-deploy applications
- ArcGIS Runtime SDK for Windows Mobile (to build custom mapping applications)
- Mobile Project Center (used to configure and deploy mobile projects)
- Mobile geoprocessing tools

## What You Get with GeoCollector for ArcGIS for Windows Mobile

- Current Trimble GeoExplorer® series ultrarugged handheld device with integrated GNSS receiver including two choices of accuracy
  - 10-centimeter capable (GeoCollector XH)
  - 50-centimeter capable (GeoCollector XT)
- Trimble Positions™ mobile extension to connect to real-time VRS networks or log GPS data that can be postprocessed using optional Trimble Positions Desktop add-in
- Optional Trimble Floodlight™ satellite shadow reduction technology that enhances GNSS performance to deliver more positions and better accuracies in difficult conditions (standard on GeoCollector XH)

### Hardware Specifications

- OMAP 3503 series processor running Windows Mobile 6.5 (Professional edition) operating system
- Sunlight-readable, 4.2-inch transreflective LED-backlit LCD (480 x 640)
- 3.5G modem
- 5-megapixel autofocus camera
- High-capacity, field-swappable battery
- 2 GB internal storage
- Bluetooth® wireless technology
- 802.11 b/g Wi-Fi®
- External SD/SDHC card slot



Esri's ArcGIS software increases the quality and value of your enterprise GIS.

[esri.com/geocollector](http://esri.com/geocollector)



Understanding our world.

Copyright © 2012 Esri. All rights reserved. Esri, the Esri globe logo, ArcGIS, GeoCollector, and esri.com are trademarks, service marks, or registered marks of Esri in the United States, the European Community, or certain other jurisdictions. Other companies and products or services mentioned herein may be trademarks, service marks, or registered marks of their respective mark owners.

132991 ESR11.5M11/12ek